



RIGHTSHIP

Managing risk and reducing incidents through information sharing

by RightShip

Who is RightShip

Since 2001, RightShip has been the world's leading third party maritime due diligence organisation, providing expertise and transparency in safety, sustainability and social practices via digital platforms.

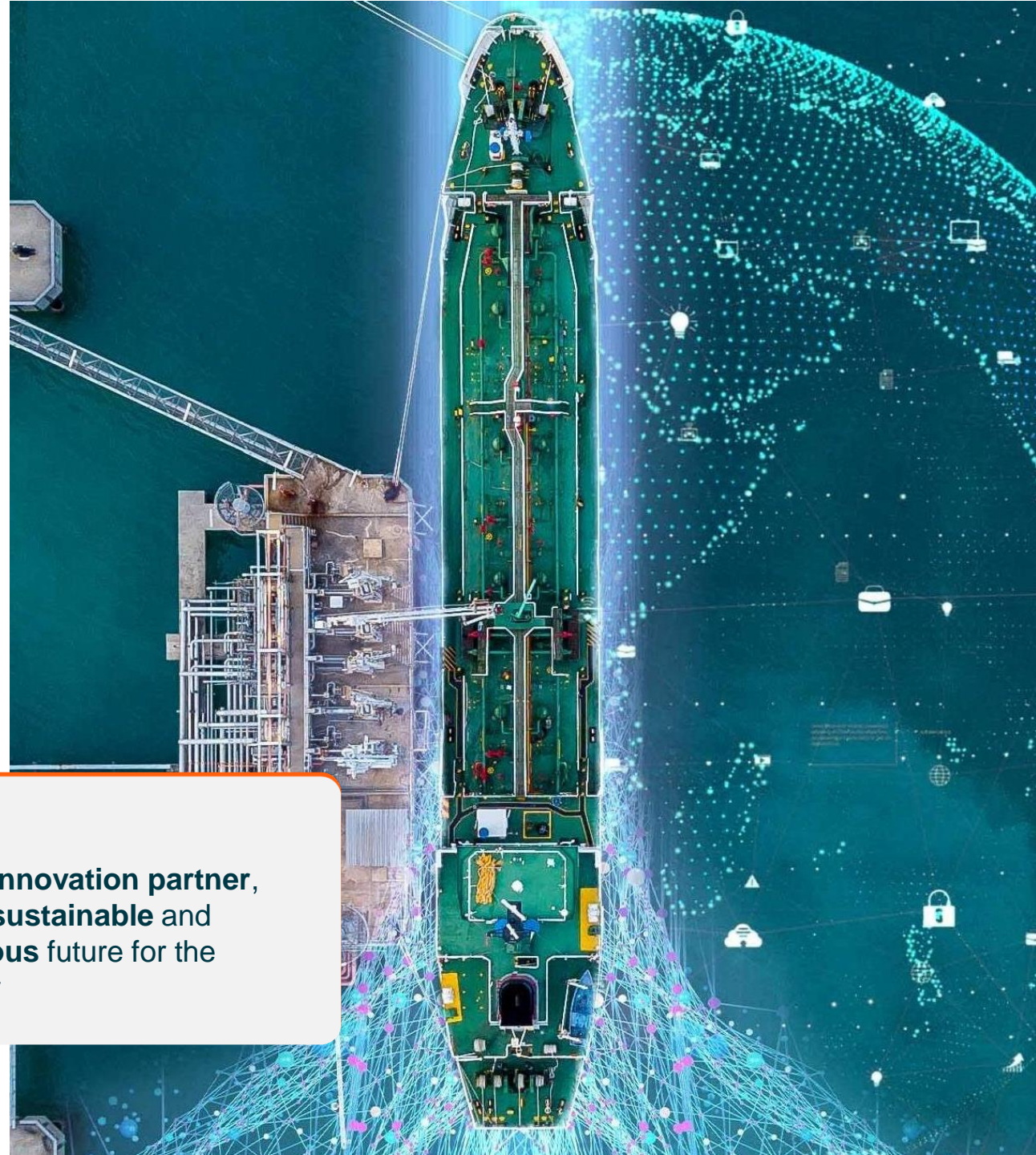
We bring together years of industry expertise with the output from analytics and large data sets to provide our safety and environmental scoring systems, recommendations and consultancy services.

Vision

A maritime industry that causes **zero harm**

Mission

To be a **trusted innovation partner**, charting a **safe, sustainable and socially conscious** future for the maritime industry



Our focus, core customers and users



Ports
Terminals
Refineries




Charterers
Cargo Traders



Ship Owners
Ship Managers
Ship Operators



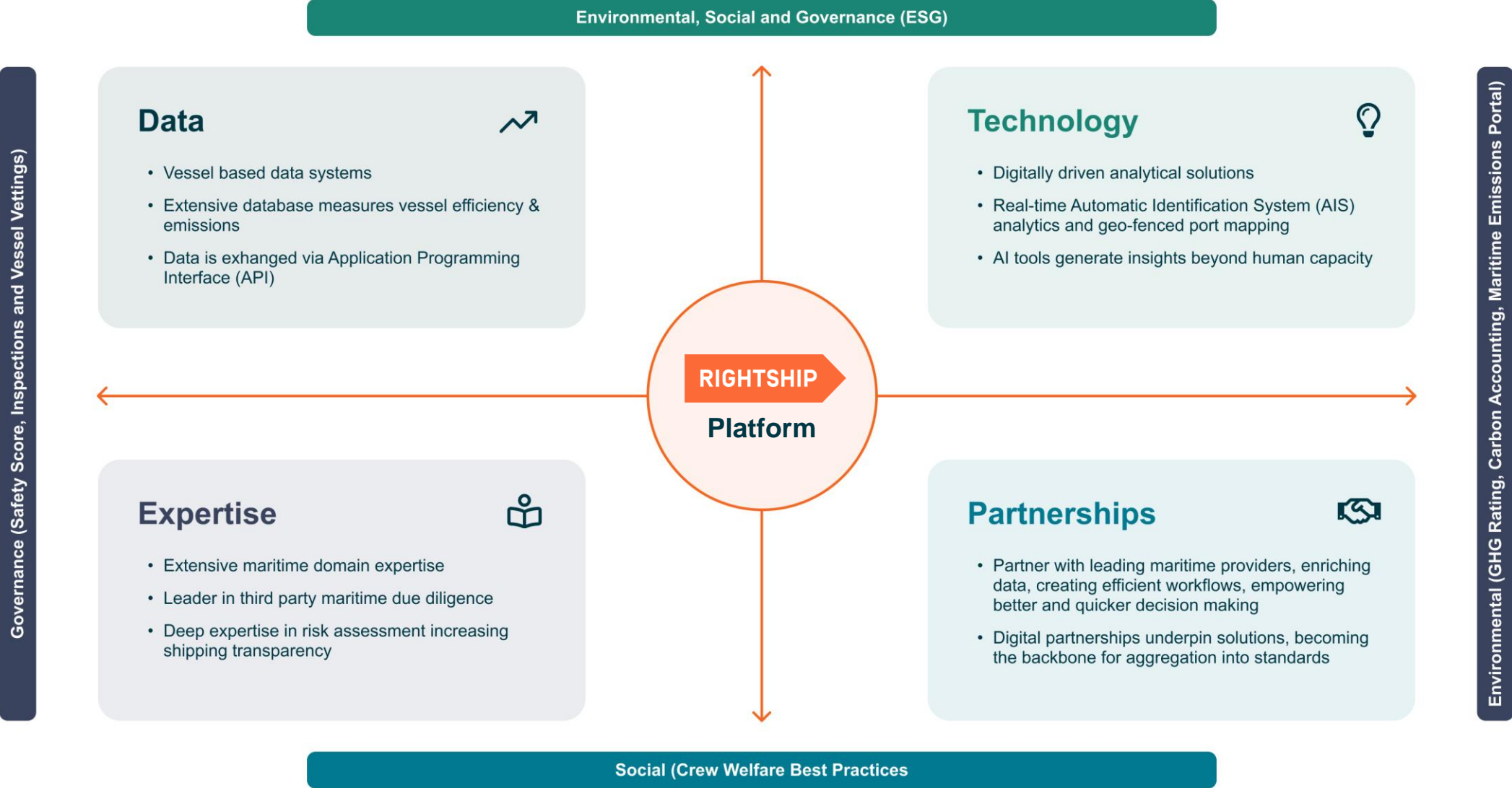
Insurance



Finance
Flag State

Class Societies
NGOs

The RightShip Ecosystem



We are powered by our Platform

The RightShip Platform accesses proprietary and third-party data to power the results of vessel vetting and inspections.

Over 200,000 vessels present across all ship types



101,500 Ratings



1,633,000 Port State Control Records



8,078 Companies



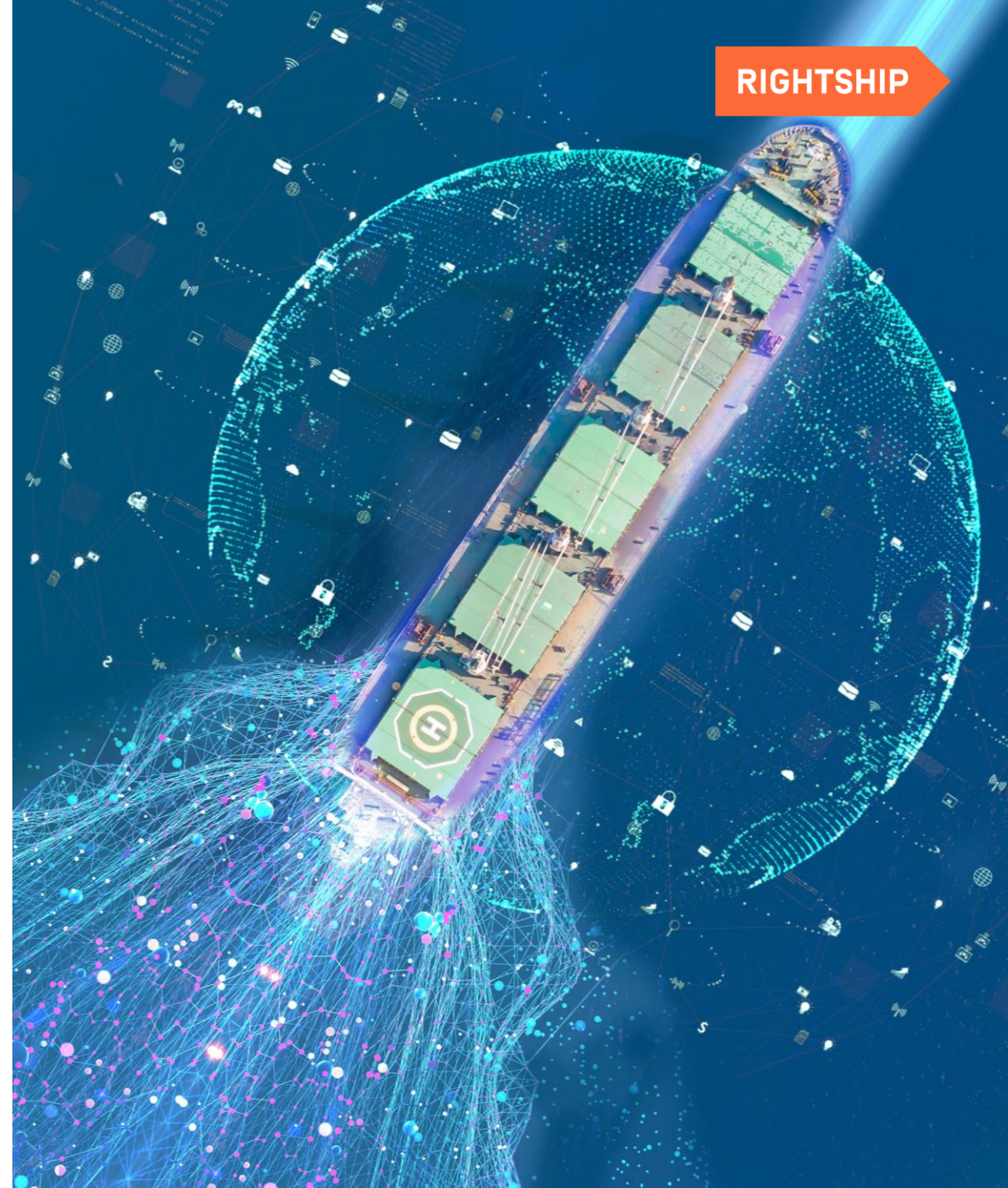
174,869 Incidents



36,547 Feedback Reports



14,954 RightShip Inspections



Products we offer on our platform



Ports & Terminals are facing unprecedented challenges..



50%

of global incidents
occur within Port Limits



1,955

vessels were detained
by PSC Authorities in
2022

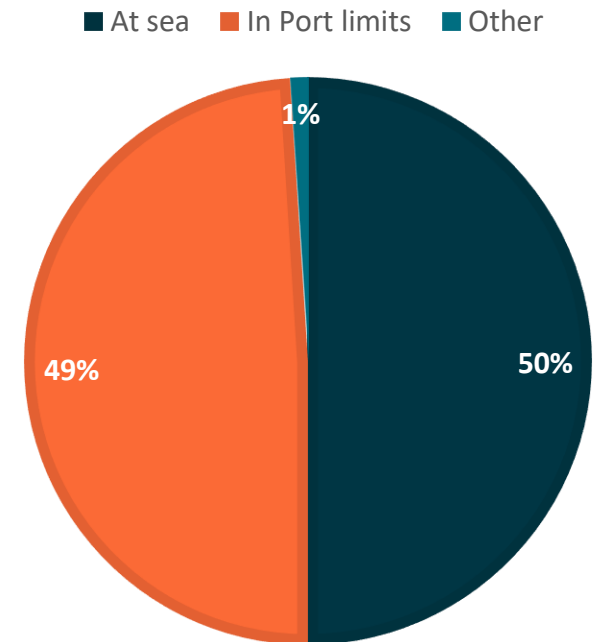
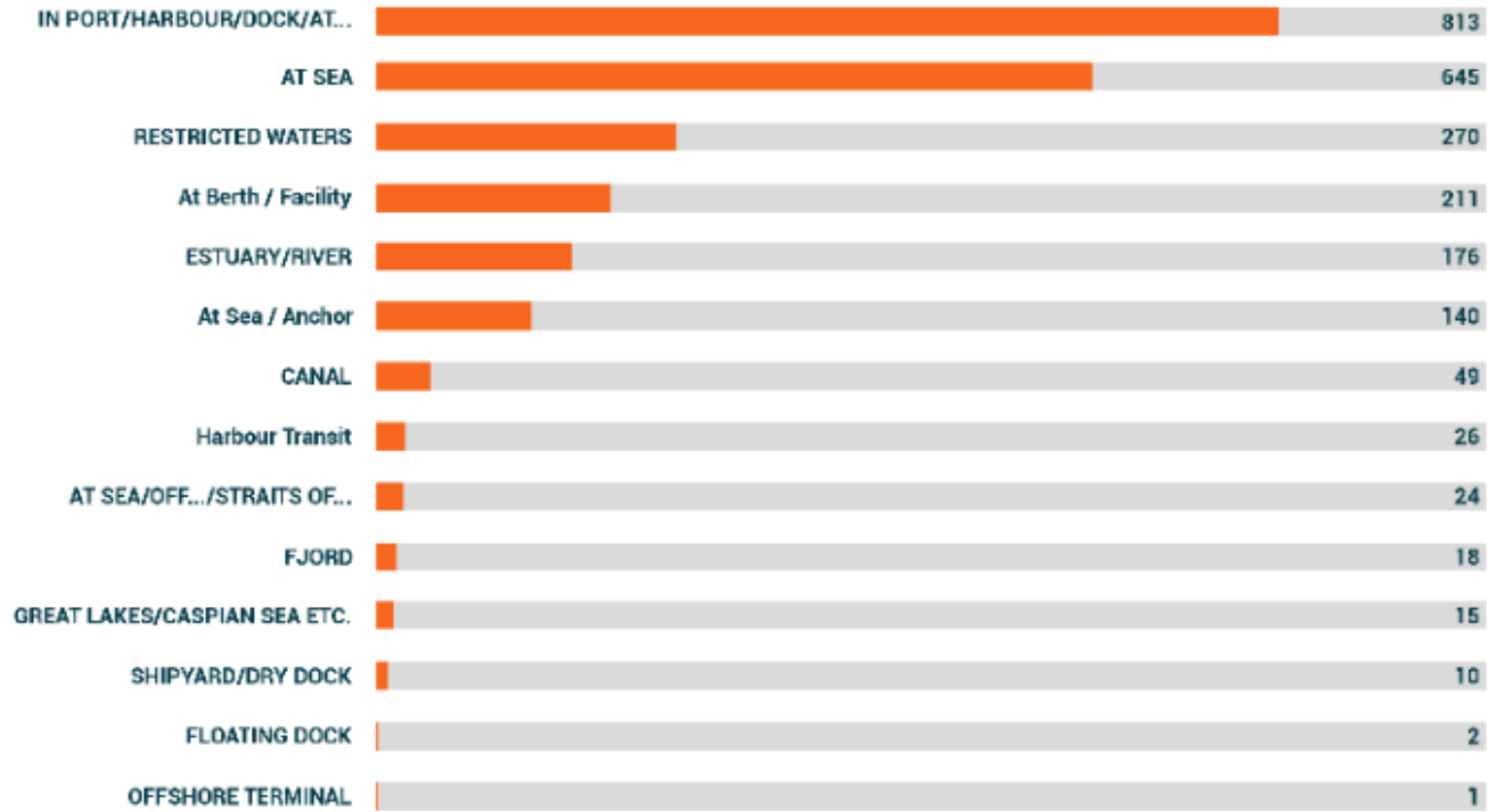


10,445

days of PSC
detentions

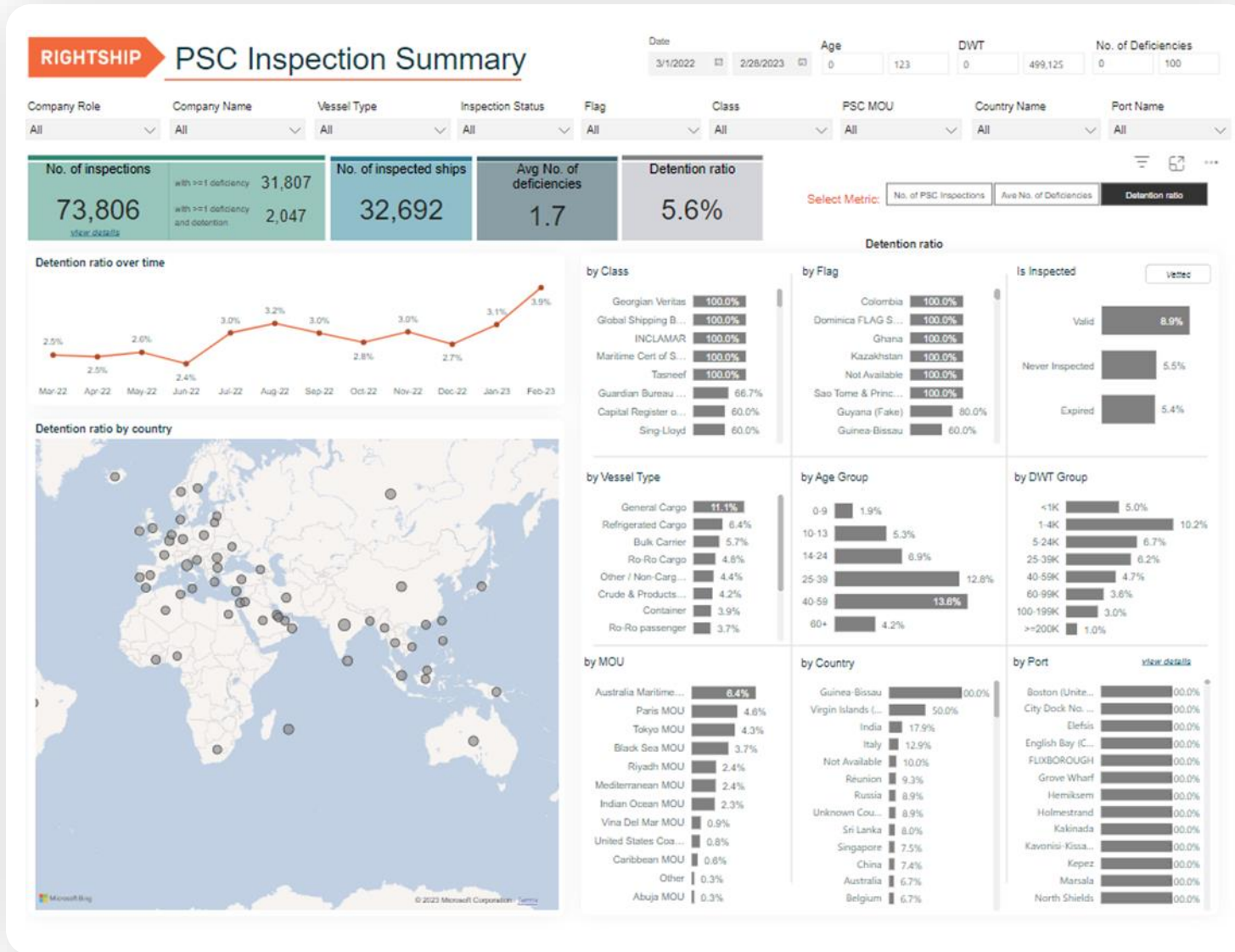
Incidents Summary - Location

Number of Incidents by vessel location 2022



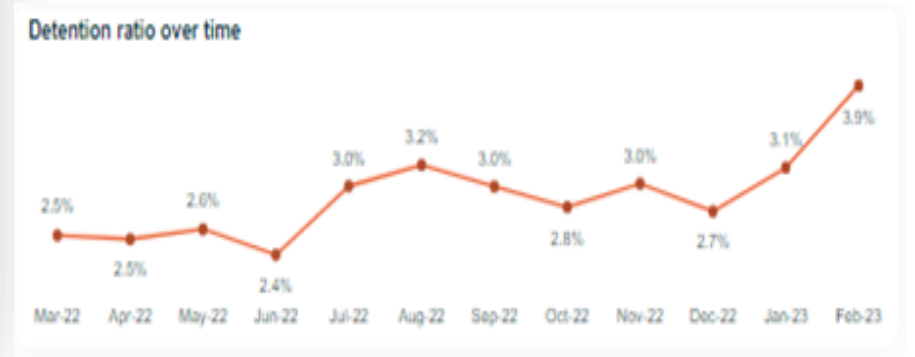
DATA SHOWN ABOVE IS BASED ON RIGHTSHIP PLATFORM DATABASE AND MAY NOT REPRESENT ALL INCIDENTS OCCURRED

Port State Control

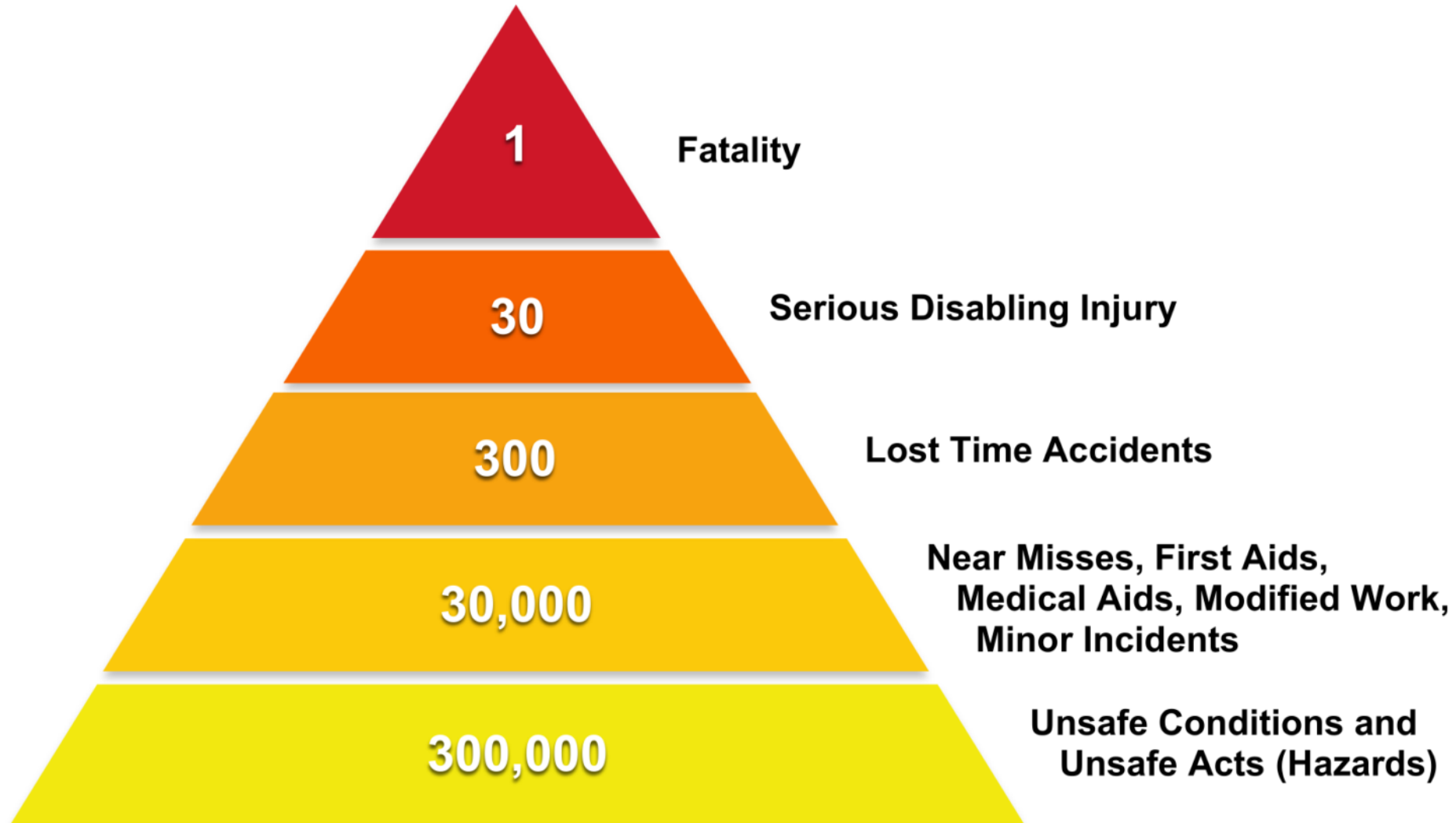


WORLDWIDE

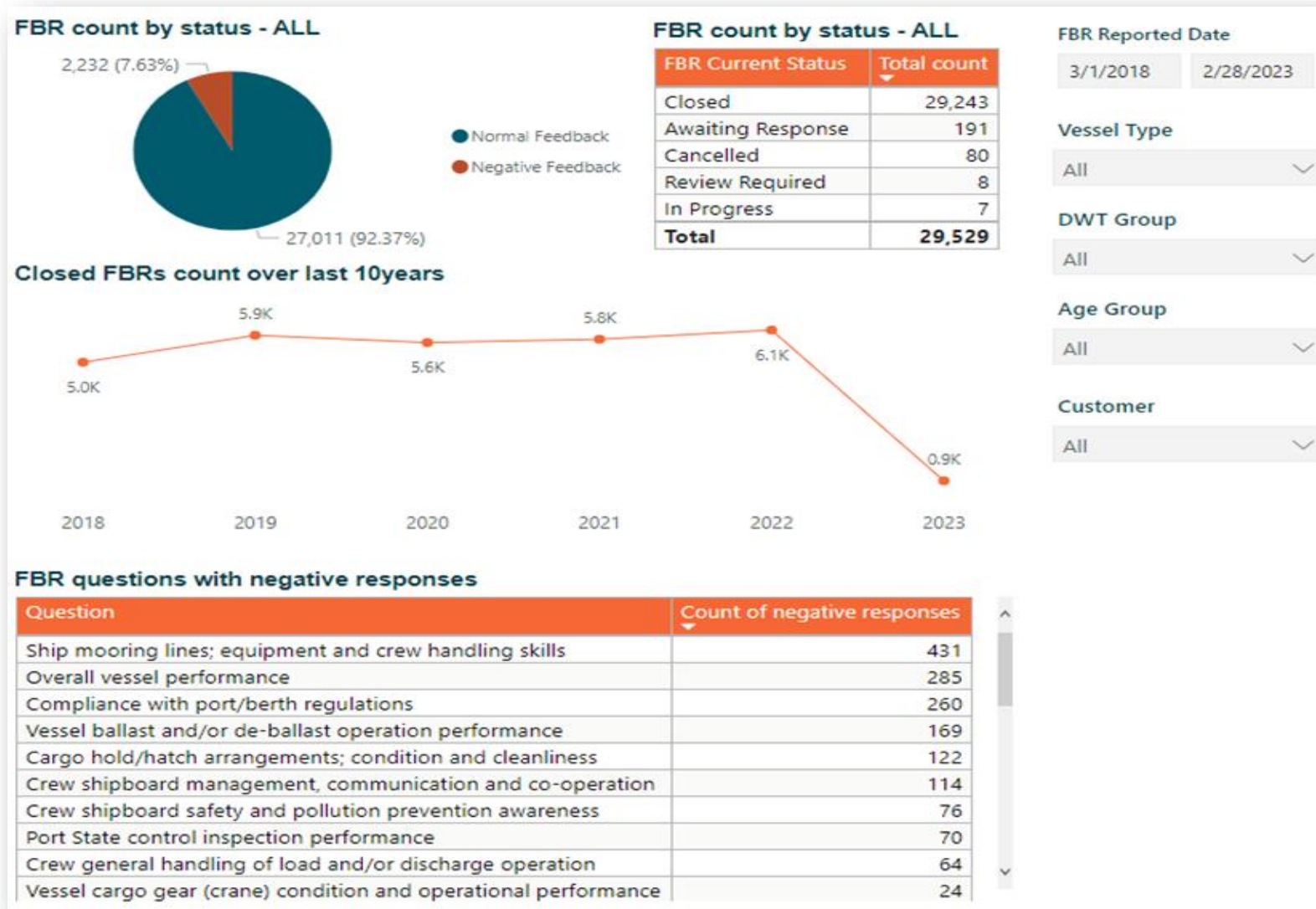
73806 INSPECTIONS
 32692 SHIPS INSPECTED
 1.7 AVERAGE NO OF DEFICIENCIES
 5.60% DETENTION RATIO
 10,445 DAYS OF DETENTIONS



Near Miss Triangle



Terminal Feed Back Reports



Understanding incoming risks is difficult and time-consuming

We are often presented with limited data to inform our decisions.

Which vessel exposes your port to the most amount of risk?

Vessel Type	Age	DWT	Class	Flag
Bulk Carrier	7.9	82,009	NKK	Greece
Bulk Carrier	13.3	82,094	NKK	Greece
Bulk Carrier	4.9	82,083	Lloyds	Marshal Islands







However, with the right product, risks start to become clearer

The first vessel, is in fact the area of concern

September 2022

Unloading at terminal

Fatality of stevedore

Vessel Type	Age	DWT	Class	Operator	Safety Score	GHG Rating	DOC Score
Bulk Carrier	7.9	82,009	NKK	Greece	 SAFETY SCORE 1/5 ⚠	GHG D Verified	 DOC SUBSCORE 3/5
Bulk Carrier	13.3	82,094	NKK	Greece	 SAFETY SCORE 5/5	GHG D+ Verified	 DOC SUBSCORE 5/5
Bulk Carrier	4.9	82,083	Lloyds	Marshal Islands	 SAFETY SCORE 5/5 ⚠	GHG C Verified	 DOC SUBSCORE 5/5



RIGHTSHIP

Why PortRISK?

**Only by understanding where we stand today
can we chart a course for a
Zero Harm Maritime industry**

Introducing PortRISK

Empowering Port and Terminal Risk Management

PortRISK, a cutting-edge, **automated Risk Management Solution** tailored specifically for Ports & Terminals, revolutionizes the way you navigate the challenges of **vessel pre arrival preparations**.

Our advanced system seamlessly **screens** every inbound **vessel**, prioritizing the **risks** that matter most to you, ranging from pilot ladder concerns to propulsion risks. With PortRISK, you can rest assured knowing that we have you covered.



How PortRISK works for you...

- ✓ **Automatically** screens inbound vessels for specific risks that matter most to you.
- ✓ Consolidates **risk analysis** into a simple Low, Medium, High Vessel risk outcome so you're informed of what's important
- ✓ Eliminates the need for manual vessel research and **reduces risks** of delays, detentions, and reduced throughput.
- ✓ Empowers **proactive risk management** and enhances **operational efficiency**.
- ✓ Facilitates easy **sharing of information** and experience among ports.
- ✓ Puts you on the front foot, ensuring a **safer** and more **efficient** port experience.



Comprehensive Risk Coverage

PortRISK covers 19 RISK areas, each of which has a number of specific risks that are auto screened to determine risks that matter to you. We provide a baseline of rules you can use or you can select what matter most to you and your port operations.

Mooring & Berthing Risk

Pilotage Risk

Machinery Risk

Detention Risk

Navigation Risk

Safety Risk

Improper Maintenance Risk

Competency Risk

Financial Risk

Conditions of Class Risk

Environmental Risk

Water Pollution Risk

Noise Pollution Risk

Air Pollution Risk

Crew Risk

Dangerous Goods Risk

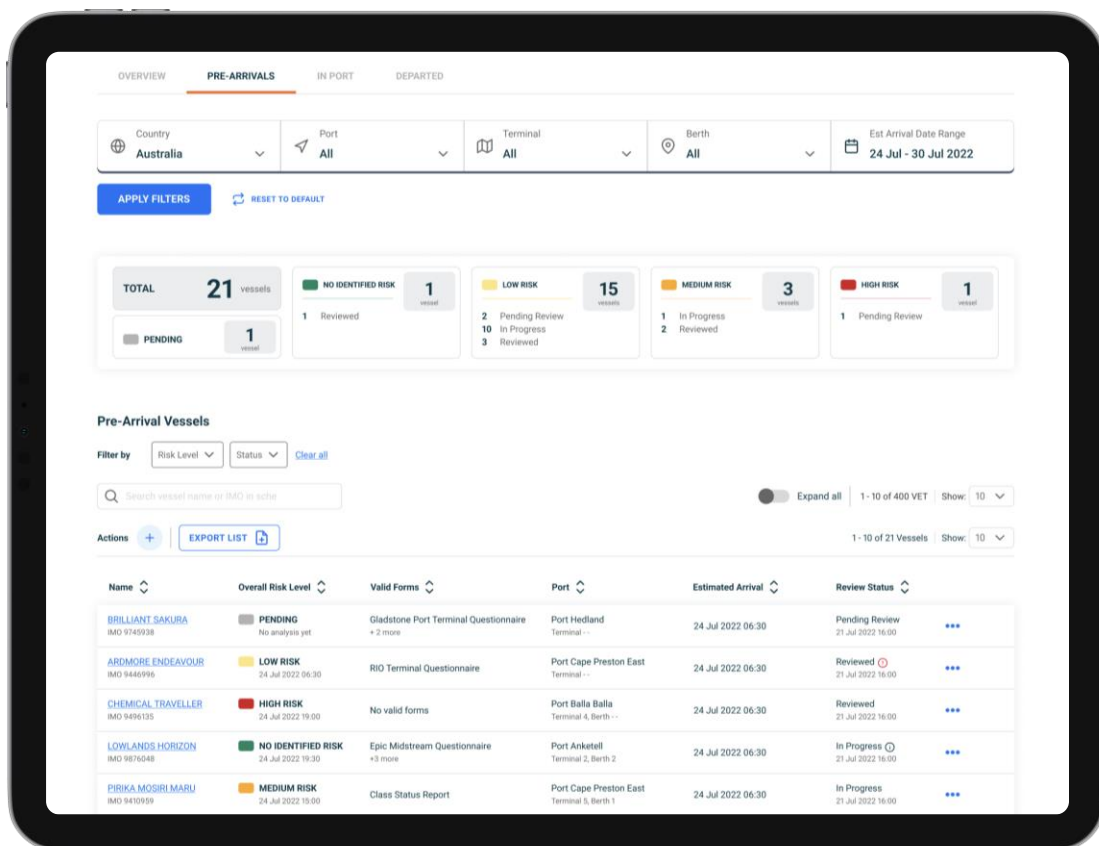
Security Risk

Cargo Operations Risk

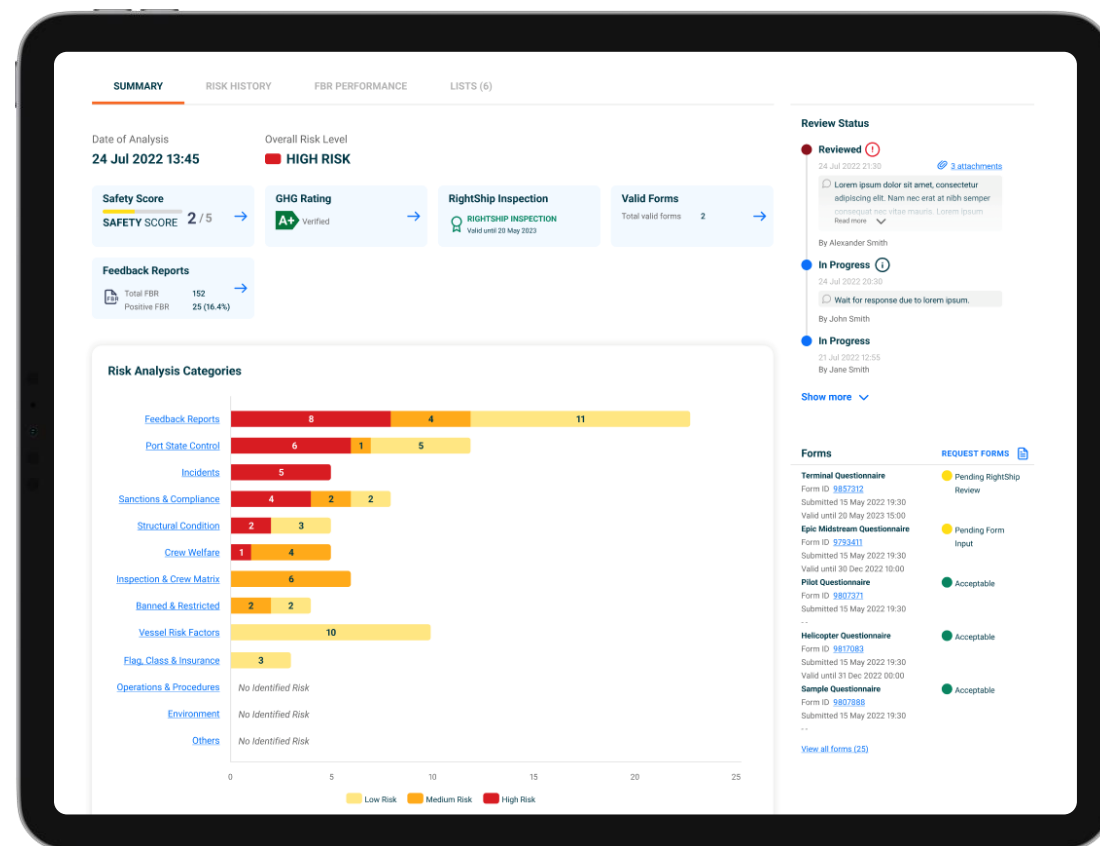
**Unknown Vessel Quality
Risk**

With PortRISK, you get the full picture of risks entering your port

Risk overview of all pre arriving vessels



Risk details for each vessel



With PortRISK, you get the full picture of risks entering your port

Historical Risk Analysis

SUMMARY **RISK HISTORY** FBR PERFORMANCE LISTS (6)

Past Vessel Risk Analysis

Date	No analysis/pending	No Identified Risk	Low Risk	Medium Risk	High Risk
18 Jul	1	0	0	0	0
19 Jul	1	0	0	0	0
20 Jul	0	0	0	2	0
21 Jul	0	0	0	1	0
22 Jul	0	0	0	1	0
23 Jul	0	0	0	0	0
24 Jul	0	0	0	0	8

Filters: High Risk (8) Medium Risk (4) Low Risk (11) No Identified Risk (0) Only Changed Outcomes (6) Risk Category Clear all

Search in rules Expand all 1 - 10 of 400 VET Show: 10

Feedback Reports

Report	23 Jul	24 Jul
Dow Jones List of Sanctions	No Identified Risk	High Risk

Port State Control

Check	23 Jul	24 Jul
Lorem ipsum Dolor Sit Amet Consectetur	Low Risk	High Risk
Donec Vitae Sapient Cursum Facillisis Lacus	No Identified Risk	High Risk
Cras Pharetra Scelerisque Mollis	High Risk	Low Risk
Morbi Tempus Nibh Justo	Medium Risk	High Risk

Incidents

Incident	23 Jul	24 Jul
Lorem ipsum Dolor Sit Amet Consectetur	High Risk	Medium Risk

Benchmarking Vs Similar Vessels

Benchmarking

This is the distribution of Safety Scores for similar vessels to the ZHONG GU DONG GUAN. Benchmarking for this vessel is filtered by similar Type only.

Safety Score	Number of Vessels
1/5	2
2/5	4
3/5	43
4/5	85
5/5	141

This vessel is here (at 4/5) Average Peer Group Safety Score is here (at 4.5/5)

Deep Dive History of Vessels

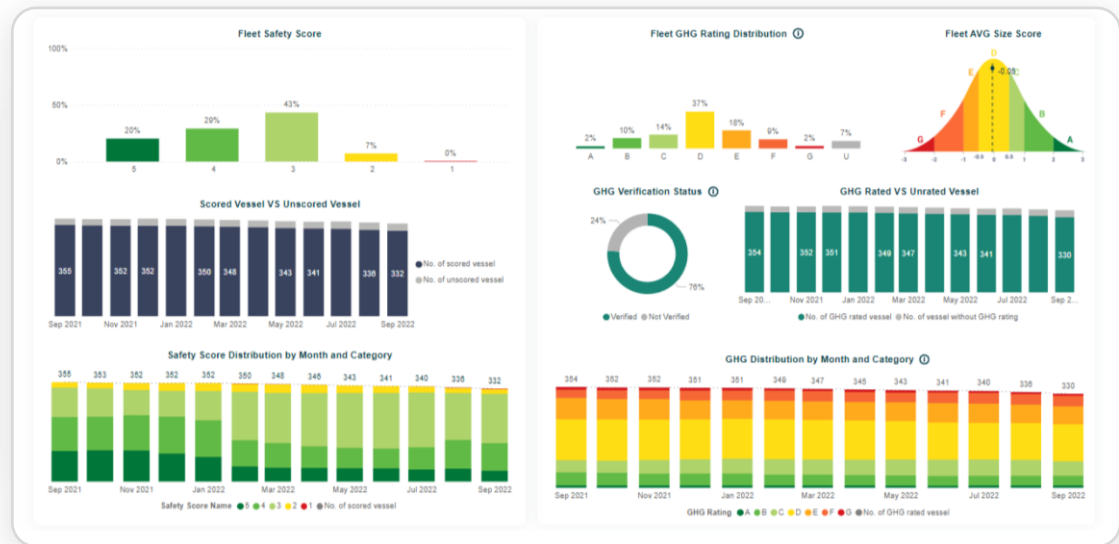
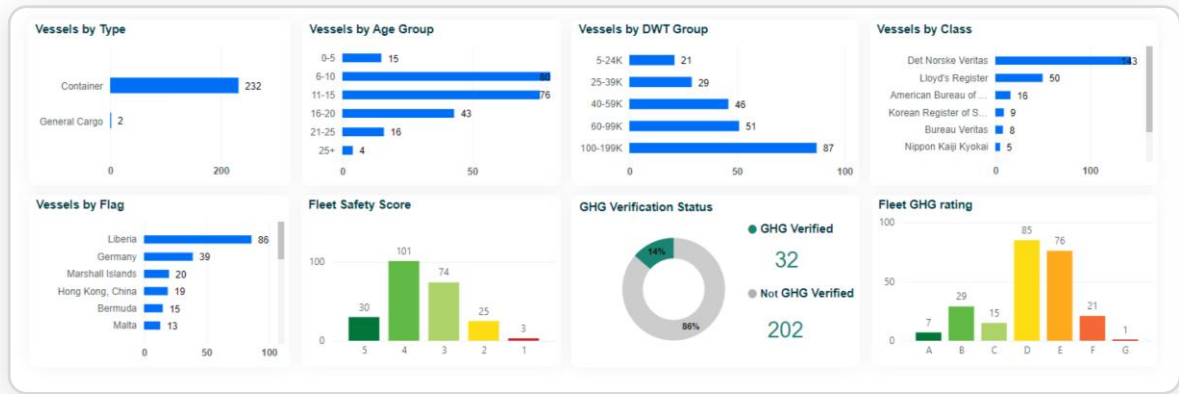
Timeline

From 2018 To Current

- RS Inspection
- CFR
- Screening
- Vetting
- Environmental Review
- Incident
- Port State Control
- Feedback Report
- Review
- Safety Score
- GHG Rating

With PortRISK, you get the full picture of risks entering your port

Management Company Analysis & Fleet Performance



Information sharing is key to successful risk management



The pilot ladder was not compliant – we must remember that next time.

A



I wish I knew about the pilot ladder issues so I could have prepared our pilots. The vessel also had mechanical issues - sigh!

B

TODAY



In hindsight, I would have sent 2 tugs and ensured a daylight arrival – but how was I supposed to know?

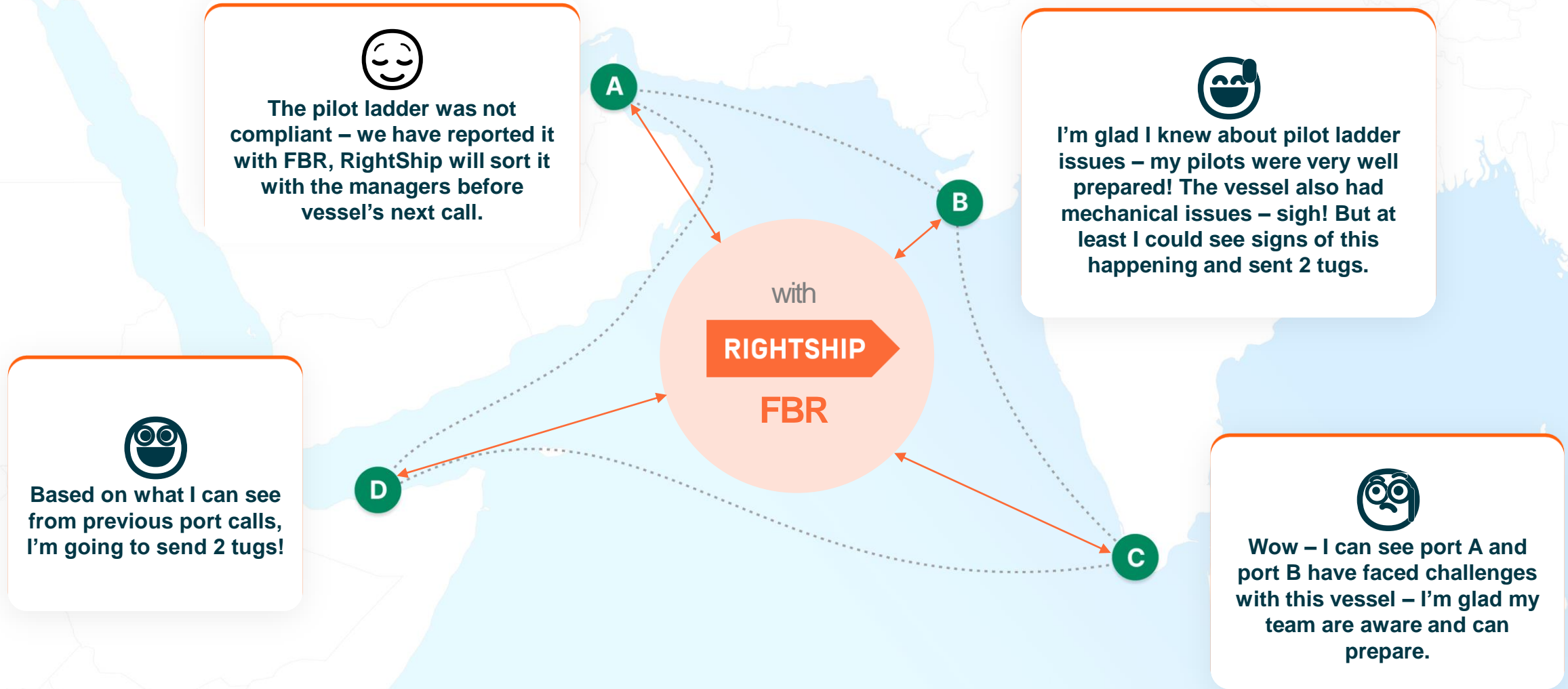
D



I'm not sure about this incoming vessel – I wish I knew what port B experienced.

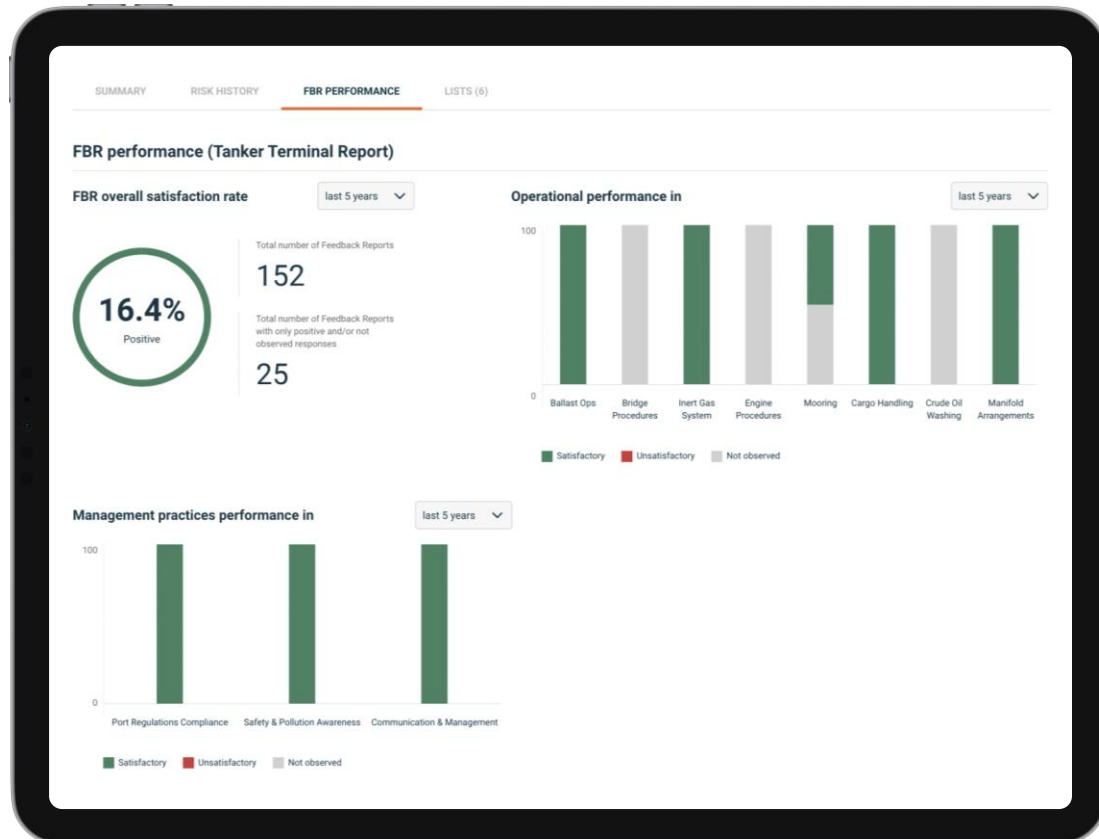
C

Information sharing is key to successful risk management



By Feedback Reporting

RIGHTSHIP



Feedback Reports are an established reporting mechanism within the Port Risk module and is completed and submitted by ports for vessels calling at their port/ facility



Allows ports to report, track, record and see at an easy glance a history of the operation performance of a vessel across key operational areas (e.g., mooring)



Categories can be tailored to individual customers and augmented with notes for subsequent users either internally or externally to create a data sharing eco system.

Automate Information Requests

Your Challenge

- ❗ Manual requests for information - introducing risk of human error and delay
- ❗ Manual data sharing across Port stakeholders
- ❗ No central records and port wide reporting
- ❗ Zero visibility on status of information requests
- ❗ Manual review of information received

Our Solution

- ✅ Auto request information without human intervention
- ✅ Data is auto shared amongst Port stakeholders once received
- ✅ Full history of information required and deep dive reporting available
- ✅ Track the status of your information requests to reduce change of delay
- ✅ Auto review information received and improve accuracy and productivity

By Terminal Questionnaires and Forms

RIGHTSHIP

Name	Form	Submitted Date	Valid Until	Status
CHEMICAL TRAVELLER IMO 9496135	Epic Midstream Questionnaire Form ID 354345	22 Jul 2022, 11:56	25 Dec 2022, 12:00	Pending Form Input 2 days ago
CHEMICAL TRAVELLER IMO 9496135	Terminal Questionnaire Form ID 789454	22 Jul 2022, 11:56	25 Dec 2022, 12:00	Unacceptable 2 days ago
CHEMICAL TRAVELLER IMO 9496135	Pilot Questionnaire Form ID 434234	22 Jul 2022, 11:56	25 Dec 2022, 12:00	Cancelled 2 days ago
CHEMICAL TRAVELLER IMO 9496135	Helicopter Questionnaire Form ID 354345	10 May 2022, 21:30	--	Acceptable 2 months ago
CHEMICAL TRAVELLER IMO 9804851	Terminal Questionnaire Form ID 789454	10 May 2022, 21:30	30 Jun 2022, 12:00	Pending Terminal Review 2 months ago
CHEMICAL TRAVELLER IMO 9496135	Pilot Questionnaire Form ID 434234	10 May 2022, 21:30	30 Jun 2022, 12:00	Pending Terminal Review 2 months ago
CHEMICAL TRAVELLER IMO 9804851	Sample Questionnaire Form ID 354345	28 Feb 2022, 06:15	--	Acceptable 5 months ago
CHEMICAL TRAVELLER IMO 9496135	Terminal Questionnaire Form ID 789454	28 Feb 2022, 06:15	01 May 2022, 12:00	Acceptable 5 months ago
CHEMICAL TRAVELLER IMO 9496135	Pilot Questionnaire Form ID 434234	28 Feb 2022, 06:15	--	Pending Terminal Review 5 months ago



An efficient way to auto request, store and access to forms like berth fit questionnaires.



Ports and Terminals can utilize custom-made questionnaires to check vessel's suitability on dimensions, technical and operational parameters.



Forget long email chains, pdf's and excels and leverage automated information gathering & ability to analyze trends and data at ease.

To summarize...

The Problem

- ✘ Incident and PSC detention statistics clearly indicate that Ports and Terminals are facing **increased risks** due to vessels calling
- ✘ There aren't adequate **mechanisms** and **risk evaluation** models within the port and terminal space for ports and terminals to have the **visibility**, foresight of the operational risks of vessels due to call at their port or terminal.
- ✘ There isn't a common and useful platform to record and **share information** on operational events, unfavourable conditions, or items that require greater awareness for other stakeholders

The Solution

- ✔ **Proactive** risk management, reducing incidents and detentions.
- ✔ Gain **visibility** and foresight for smooth operations.
- ✔ **Centralized** information sharing for effective collaboration.
- ✔ Efficient **communication**, timely actions to address risks.
- ✔ Learn from industry peers, foster **continuous improvement**.
- ✔ **Data-driven** decisions, optimized risk management.
- ✔ Strong regulatory compliance, **enhanced safety** and security.
- ✔ **Build reputation**, attract business opportunities.

With our solution, ports and terminals can proactively manage risks, promote collaboration, and create a safer and more efficient environment, ensuring long-term success

Summary



Proactive Risk Management: Our solution enables ports and terminals to proactively identify and mitigate operational risks associated with vessel calls, reducing incidents and detentions.



Enhanced Visibility and Foresight: Gain comprehensive visibility and foresight into vessel-related risks, empowering effective preventive measures and ensuring smooth operations.



Centralized Information Sharing: Our platform provides a common space for recording and sharing operational events, unfavorable conditions, and important insights, fostering collaboration among stakeholders.



Improved Communication: Facilitate transparent and efficient communication among port stakeholders, enabling timely actions to address risks and maintain operational efficiency.



Knowledge Exchange and Learning: Learn from industry peers' experiences, fostering continuous improvement and best practices across ports and terminals.



Data-Driven Decision Making: Leverage data analytics and reporting capabilities for informed decision making, identifying trends, implementing preventive measures, and optimizing risk management strategies.



Enhanced Reputation: Build a strong reputation and trust among stakeholders by effectively managing risks, attracting more business opportunities and sustainable growth.

Request a PortRISK Demo

